

# Student Almanac

Shamela Rizwana

Assistant Professor, SRM Institute of Science & Technology, Chennai, Tamil Nadu, India.

M.V. Keerti priya

Student, SRM Institute of Science & Technology, Chennai, Tamil Nadu, India.

Mansi Mewara

Student, SRM Institute of Science & Technology, Chennai, Tamil Nadu, India.

**Abstract** – Student Almanac is the web application in which students can find out all the things required for them in one place. It also consists of features like Date remainder, College event alerts, holiday list and exam scheduler. College event alerts provides useful information on the upcoming and ongoing events in the college. Date remainder gives the remainder on the personalized events set by the user .Holiday list will contain the list of holidays on particular year in the college . Admin will be uploading the current updates by logging in to the web application, Students can access this anytime.

**Index Terms** – date remainder, college event alerts, holidays, exam scheduler, notification ,logging, admin.

## 1. INTRODUCTION

Student Almanac has the ability to solve the problem according to the student requirement related the current events and upcoming events in the college, exam schedule, holiday list further more it has the ability to give alerts to the user. This web application is built to contain all the happenings which is going on in all respective years and it will give the solution which are not available on other applications which are being used in colleges. The resolution of this project is to make easier when they are in need of the status of the events happening all around in the college. Students will be using this web application made by us and technically we are making this so that it could be further used by university now or in future as well. It consists lots of features. Date remainder, College event alerts, holiday list and exam scheduler. College event alerts provides useful information on the upcoming and ongoing events in the college. Date remainder gives the remainder on the personalized events set by the user .Holiday list will contain the list of holidays on particular year in the college.

The scope of this project is to make the work for students easier when they are in need of the current happenings in the college .Students will be using this web application made by us and technically we are making this so that it could be further used by universities now or in future as well.

## 2. EXISTING SYSTEM

As it's known, there are already many applications for exam schedules and college updates, but none of them help the students to get immediate alerts on the events going on in the college and getting exam scheduler reminders

## 3. PROPOSED SYSTEM

This web application has the ability to overcome this existing system by providing the means for it. Previously the applications which were running in colleges has the disadvantage of less users facilities ,and less alert notification facilities. Our web application will overcome this flaw.

## 4. ARCHITECTURE DIAGRAM

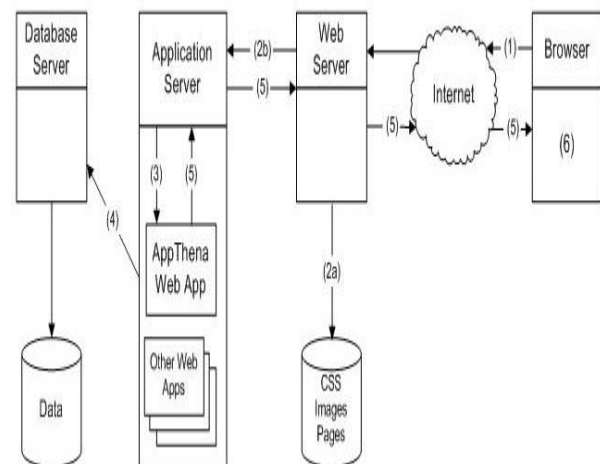


Fig 1: Architecture Diagram

A database server is a computer program that provides database services to other computer programs or computers as defined by the client- server model. The term may also refer to a computer dedicated to running such a program. Database Management system frequently provide Database server functionality and some DBMSs like MySQL rely exclusively

on the client-server model for database access. Such a server is accessed either through a front end running on the user's computer which displays requested data or the backend which runs on the server and handles tasks such as data analysis and storage. In a master-slave model, database master servers are central and primary locations of data while database slave servers are synchronized backups of the master acting as proxies. Most of the database servers works with the base of the query language. Each database understand its query language and converts it to the server readable form and execute it to retrieve the result. Every server uses its own query language and structure.

### 5. WORKFLOW DIAGRAM

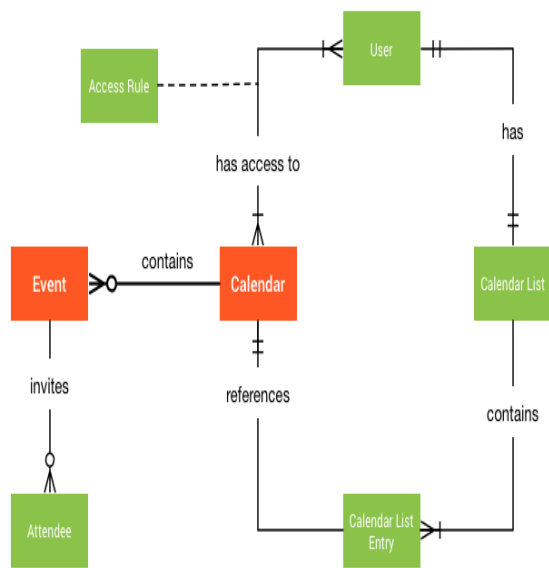


Fig 2: Workflow diagram

### 6. MODULES

#### DESIGNING(Front End)-

In this module we have done the front end designing HTML for the layout ,CSS for the font styles and to look our web application adorable. Java Script is applied on some web pages for the front end coding.

#### BACK END-

In back end procedure, Java is applied as well as MYSQL is also there for the database management.

#### 6.1 Home Page:

It consists of various navigations to the components of the web application.It consists of student's login into the app, welcome toggles and password fields



Fig 3: Home page

#### 6.2 Contact Page:

It has the query inputs from the user.

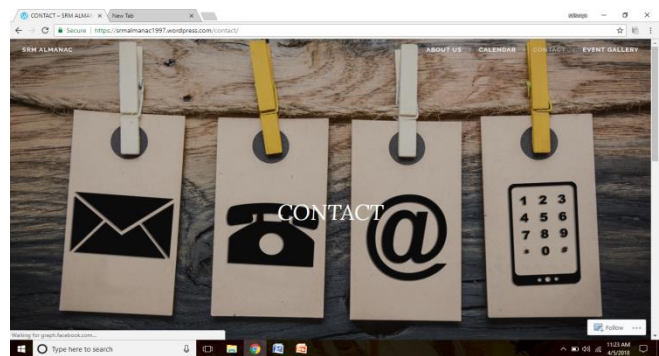


Fig 4:Contact Page

#### 6.3 Almanac:

Almanac works as a college magazine and keeps the students updated with the events scheduled on a particular day in the college.Even if the date, venue or any other information of the event is changed the user can immediately view the update with a pop up message. This saves time and keeps the faculty and the students updated.

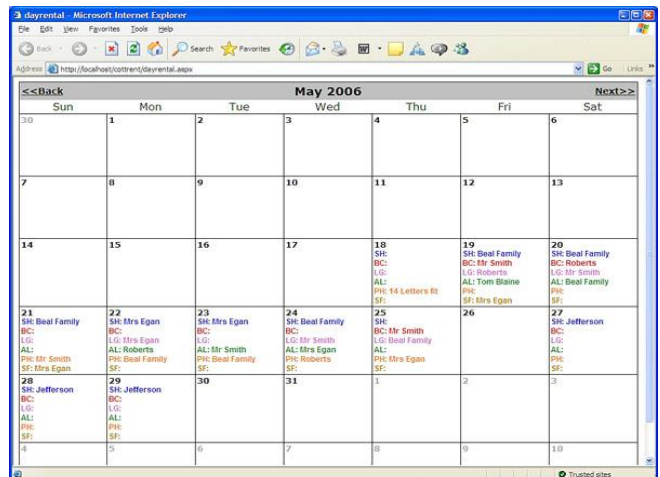


Fig 5: Almanac

#### 6.4 Event Gallery:

It has the pictures of the event.

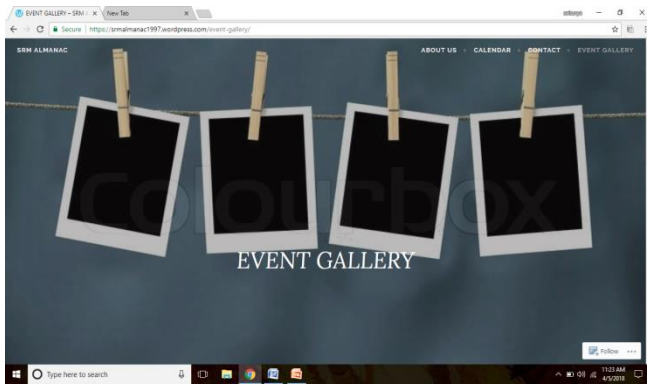


Fig 6: Event Gallery

#### 7. FUTURE ENHANCEMENT

The resolution of this project is to make the work for students easier when they are in need to know the current happenings in the college. Students will be using this web application made by us and technically we are making this so that it could be further used by universities now or in future as well

#### 8. RESULTS AND DISCUSSIONS

This web application Student Almanac serves as a best place for the students. Date remainder provides any personalized data remainder by the user. College event alert gives the information on the upcoming and ongoing events in the college. Holiday schedule gives the list of holidays in the college on a particular year. Exam scheduler keep the students updated with the university exam schedule. Once this web application gets into equation, both the students and the faculty will get benefitted.

#### REFERENCES

- [1] IEEE→Educational Date picker data analysis for content management.->Successful Measurement of content management system application.
- [2] w3schools.com.